



wetherspoon

Lloyds ^(No.1) Bar

wetherspoonhotels 

J.D. WETHERSPOON PUBS IN NOTTINGHAM

By Kurt Hatton

THE PEOPLE



TIM MARTIN
Chairman and founder.



KURT HATTON
Pub manager.



JOHN HUTSON
Chief executive.

WETHERSPOON TIMELINE

- 1979- first pub opened 9th December in Muswell Hill, North London. Called Martin's Free House, renamed Wetherspoon's in 1980.
- 1983- Rochester Castle, Stoke Newington opens, (our oldest pub to date).
- 1991- Tally Ho, North Finchley. The first pub to have a 'smoke free' bar. First edition of Wetherspoon News printed. Hamilton Hall, Liverpool Street Station opens. The first 'in' London.
- 1992- 50th pub, JJ Moons, Chiswick opens. Heathrow terminal 4 opens. Wetherspoon PLC is floated on stock market.
- 1993- Pub of the Year award. First pubs outside London open in Norwich and Bracknell. All our pubs have non smoking areas.

WETHERSPOON TIMELINE

- 1994- 100th pub, The Moon Under Water in Watford opens. Wethercentre in Watford opens. First pub in the Midlands open. Square Peg, Birmingham.
- 1996- 150 pubs. First pubs in Scotland & Wales open.
- 2000- 400 pubs. First pub in Northern Ireland opens. Spinning Mule, Belfast.
- 2001- 500th pub, Picture Palace, Enfield opens. Loo of the Year award.
- 2002- 600 pubs. CLIC Sargent chosen as our charity.
- 2008- 700 pubs.
- 2011- 800th pub opens. The Unicorn, Ripon

WETHERSPOON TIMELINE

- 2013- 900th pub opens. The Poulton Elk, Lancashire.
- 2014- first pubs in Republic of Ireland opens. The Three Tun Tavern, Dublin.
- 2015- Annual sales exceed £1.5b. Wetherspoon employ over 35,000 staff.
- 2016- £12m raised for CLIC Sargent.

NOTTINGHAM PUBS

- ❑ Admiral Sir John Borlase Warren, Stalpeford.
- ❑ Company Inn, Nottingham.
- ❑ Ernehale, Arnold.
- ❑ Free Man, Carlton.
- ❑ Gooseberry Bush, Nottingham.
- ❑ Joseph Else, Nottingham.
- ❑ Lady Chatterley, Eastwood.
- ❑ Last Post, Beeston.
- ❑ Lloyds No1, Nottingham.
- ❑ Pilgrim Oak, Hucknall.
- ❑ Roebuck Inn, Nottingham.
- ❑ Samuel Hall, Sherwood.
- ❑ Trent Bridge Inn, West Bridgford.
- ❑ William Peverel, Bulwell.
- ❑ Woodthorpe Top, Mapperely.

SIR JOHN BORLASE WARREN

opened 7th February 2012





Sir John Borlase Warren. 1753-1822

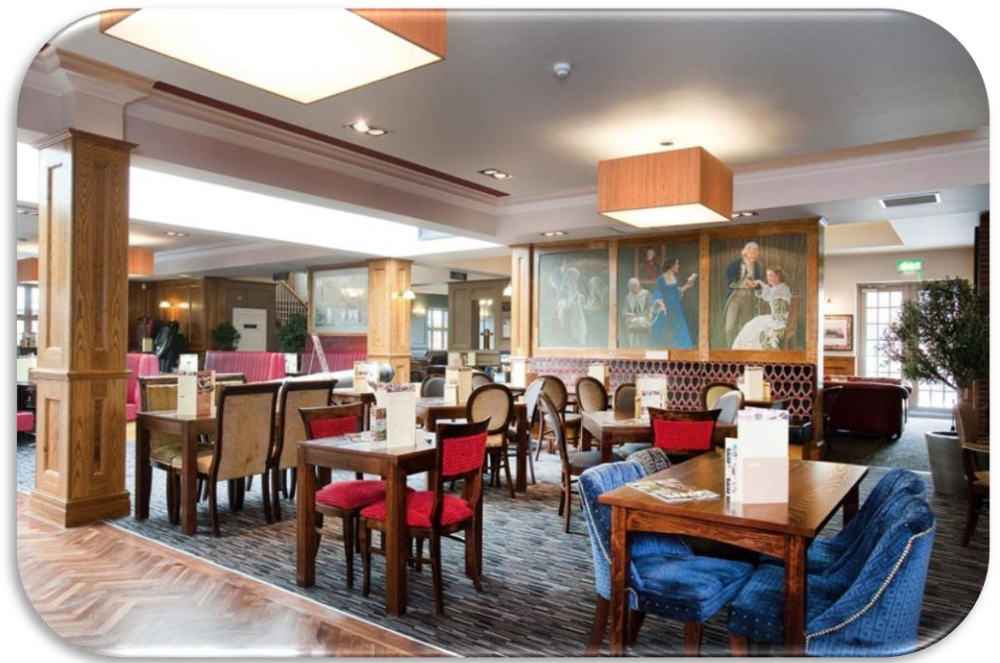
Born in Stapleford.

Began his naval career in 1777 and by 1794 was Commodore of a frigate squadron.

In 1796 he was responsible for capturing or sinking 220 French vessels.

He became an Admiral in 1810 and it is speculated that he was responsible for sinking more enemy ships than Nelson himself during the Napoleonic Wars.

He died in 1822 at the Greenwich Hospital.



THE COMPANY INN

opened 11th July 2001

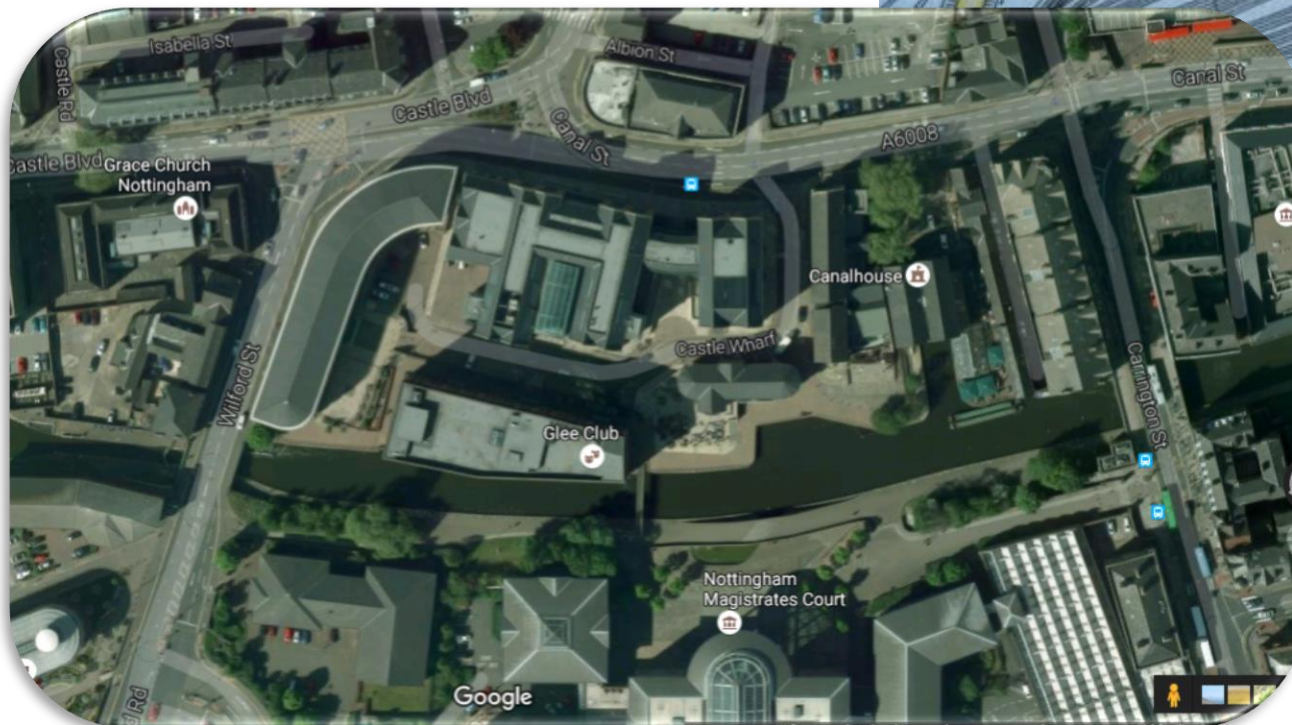


The Trent Navigation Company building was built 1919 and later became owned by British Waterways. The pub takes its name from the former owners.

The whole block was converted to offices and restaurants in 1998–2000 by Franklin Ellis Architects.



Map of 1880



Modern satellite view



Trent Navigation Company 1912



The building today

ERNEHALE

opened 26th October 1999





ERNEHALE

Occupied since the late Bronze Age, the settlement was taken over by Angles around 600AD and was named Ernehale.

Recorded in the 1068 Domesday Book as a thriving village with a population 150.

Decimated by the plague in 1436.

Site of Luddite uprising in 1811.

Population in 2011 of 30,000.

Eagle or Heron?

Ernehale translates to 'the place of the eagles'.

Were eagles once soaring over this corner of Nottingham?

'A History of Arnold' (1913) by Rev. Rupert W. King and Rev. James Russell explains.....
'Heron-hald', meaning the corner of the forest where Herons (large birds) live. Which becomes over the centuries since 500 A.D. by 'lazy' pronunciation, Eron-ald, thence Ern-old and Arn-old.



Built in 1904 as Co-Operative Store, it was vacated in the 1960's and became a furniture store until Wetherspoon converted it into the Ernehole in 1999.

FREE MAN

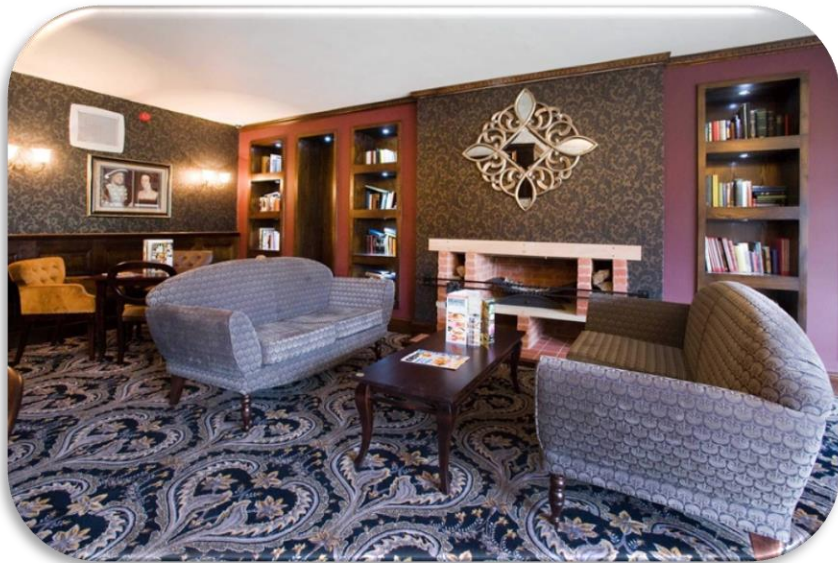
opened 23rd July 2010



A Free Man?

Located on the top of Carlton Hill the name of this pub has links back to the Anglo-Saxons who settled in the area around 600AD and gave Carlton its name. Coerl is the Anglo-Saxon word for a freeman, while 'ton' or 'tun' means an enclosed settlement. Together, Coerl and tun signify that the early settlement (recorded as Carentune or Karleton) was a small enclosure occupied by the free tenants of the lord of the manor.





Did You Know.....we have award winning toilets?

LOO
OF THE YEAR
Awards

The awards are run independently and supported by the British Toilets Association.

Each year the competition gets more fierce and the criteria harder but we continue to keep our reputation as having the best toilets in the pub world.



The Aneurin Bevan, Cardiff.
The Ledger Building, Canary Wharf.



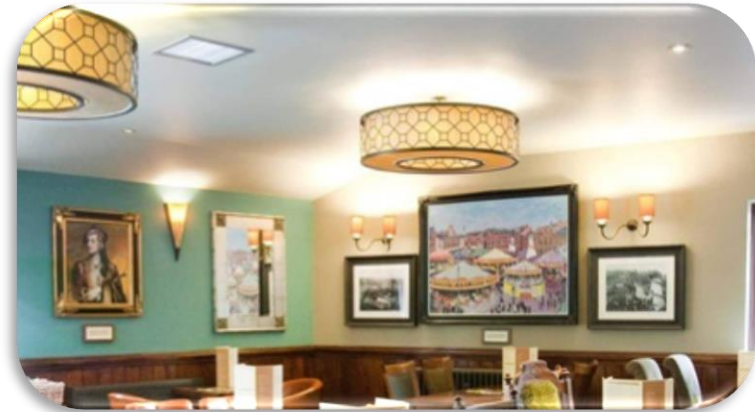
The Crossed Peels, Stirling.
The Cribbar, Newquay.

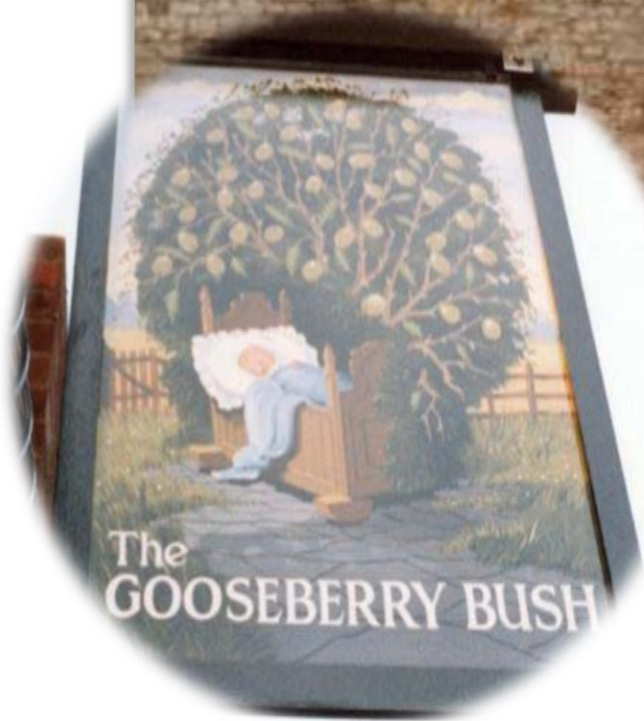


GOOSEBERRY BUSH

opened 12th July 2011







Built in 1984 for Mansfield Brewery and named the Gooseberry Bush after the place where babies are said to have been found.

Aerial shot of Women's Hospital 1976.



erial image © North East Indiana Photographers KCU
All rights reserved

Women's Hospital. Built 1928–29 by Bromley, Cartwright & Waumsley.

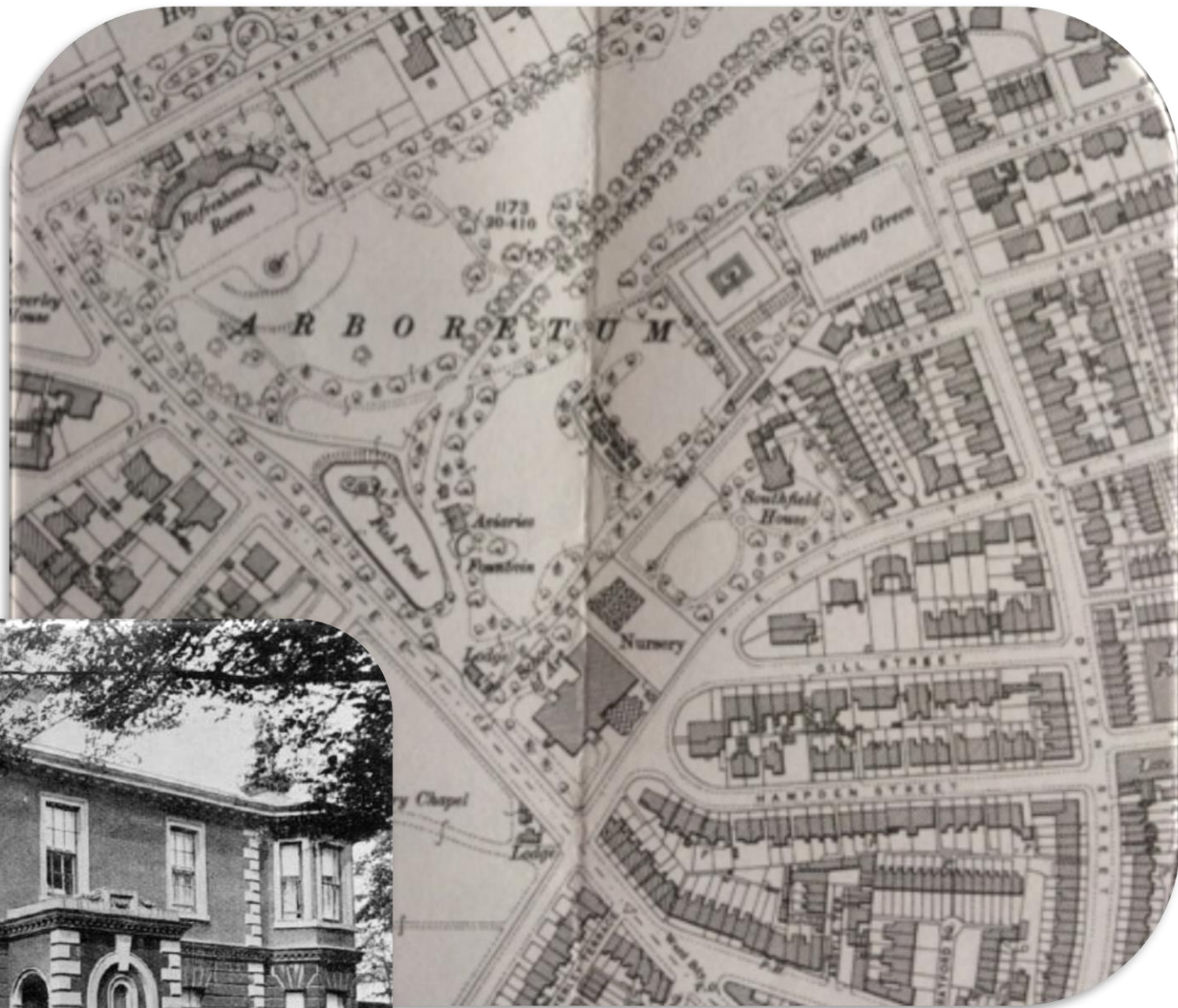
Specialising as a maternity hospital the last baby was born here in November 1981. Services were moved to the Queens Medical Centre and it officially closed in 1982.

The building was converted to flats and renamed Charleston House.



The Nottingham Hospital for Women was an amalgamation of two hospitals, the first being a hospital that began life that began in 1893 on Castle Gate in Nottingham and a smaller hospital, known as the Samaritan Hospital, on Raleigh Street.

The area of the Women's Hospital dominated by a large private house called Southfield House which had extensive gardens.



Photograph and map of 1900.

JOSEPH ELSE

opened 26th July 2000







Norwich Union House
Built 1957-59 by Evans, Cartwright & Wollatt.



Foundations being built 1957.

Described by Elain
Harwood in Pevsner;

*'Nos 10-12, lumpy
blue Norwich Union
House, by Evans,
Cartwright & Wollatt.'*

Panorama view of South Parade mid 1860's



South Parade shown on Badder & Peat map 1744 as Timber Hill.

Renamed South Parade after Exchange Walk was cut in 1868.



Working on the pediment of the Council House 1929.

Joseph Else 1874-1955.

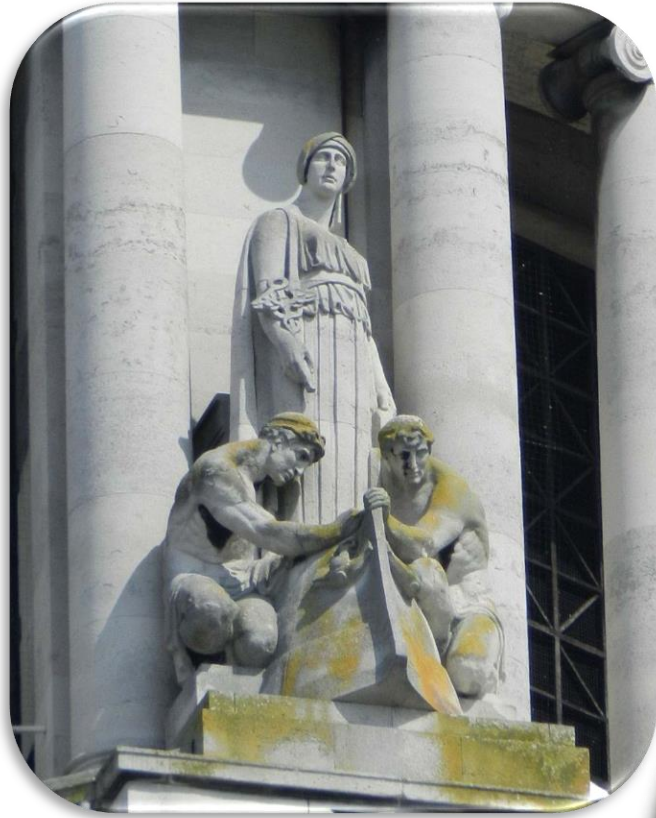
Sculptor, modelling teacher, principal of art school.

Born in Nottingham. He was the son of William Else, a leather cutter.

In the early 1890s Joseph was working as a lace designer. He studied at Nottingham School of Art between 1890-1900 and in the early 1900s attended the Royal College of Art, London. Else seems to have divided his time between London and Nottingham until 1915 when it is presumed that he was called into active war service.

From about 1919-38 Else taught modelling and sculpture at Nottingham School of Art where he was also principal from late 1922. His most important commission was for an extensive scheme of sculptural decoration for the exterior of Nottingham Council House (1927-9). This includes the lions guarding the entrance, the frieze above the Ballroom windows (representing ancient local industries such as bell-founding and alabaster) and for twenty-one figures depicting the arts and public service on the main pediment.

Some of Joseph Else sculptures in Nottingham.



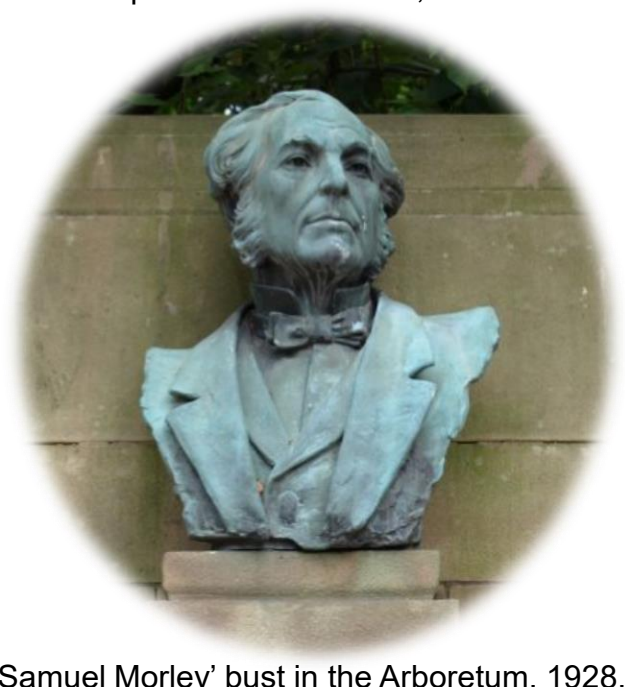
'Commerce' on Council House dome, 1928.



'Agmenon' on steps of Council House, 1928.



'St Luke' on St Luke's House, 1934.

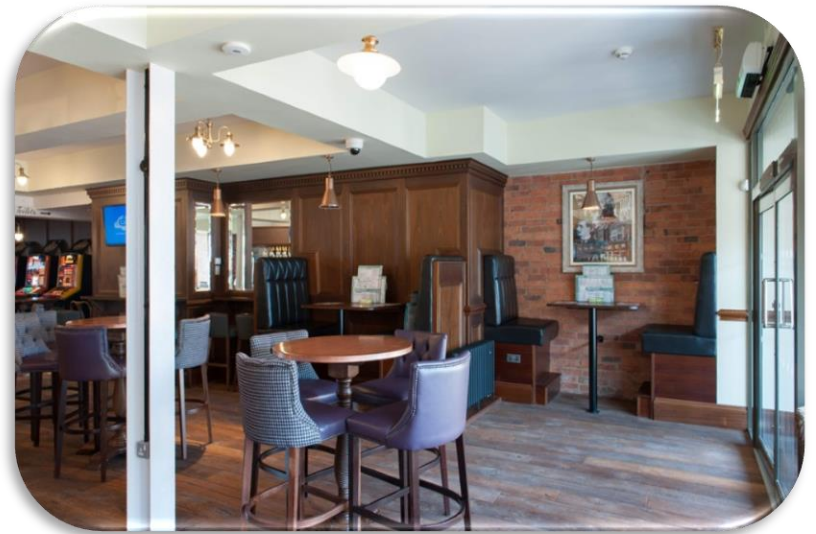


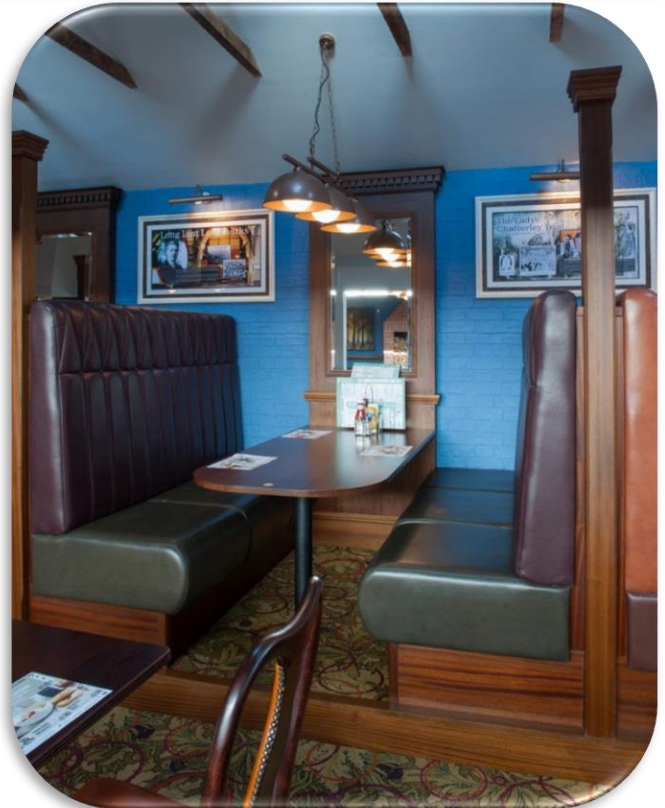
'Samuel Morley' bust in the Arboretum, 1928.

LADY CHATTERLEY

opened 24th June 2014



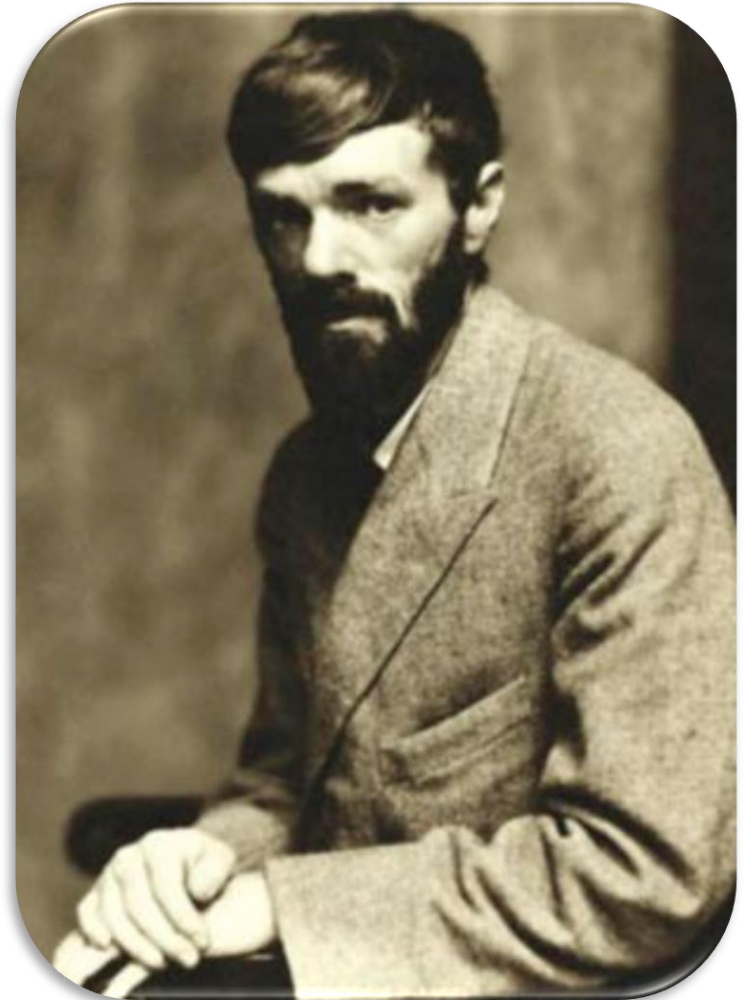




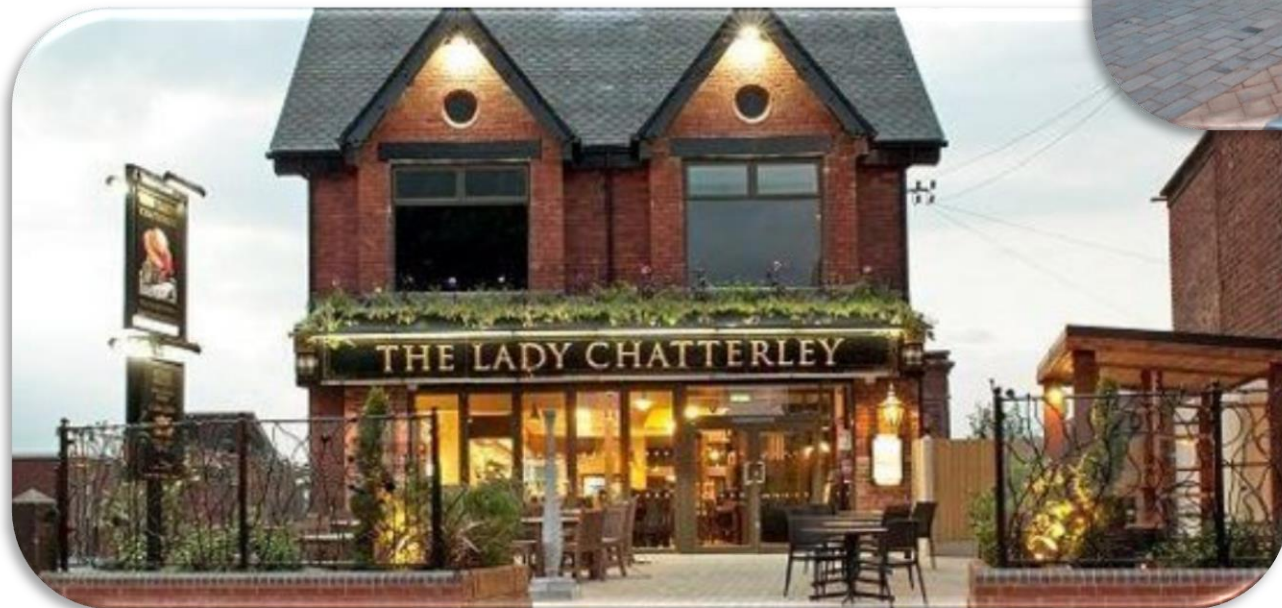
“A woman has to live her life, or live to repent not having lived it.”

The pub takes its name from DH Lawrence’s best-known and most controversial novel, *Lady Chatterley’s Lover*, published in 1928. Lawrence borrowed the name of local colliery agent George Chatterley, who lived a few doors away and served as mayor of Eastwood (1917–18).

A short walk from the pub on Victoria Street is the DH Lawrence Birthplace Museum where in September 1885 David Herbert Richards Lawrence was born.



“We’ve got to live, no matter how many skies have fallen.”



‘A Victorian house that became a car sales showroom will soon become a much awaited JD Wetherspoon free house in literary historic Eastwood.’ *Evening Post.*

LAST POST

opened 27th September 2000



Built in 1934 as the main post office in Beeston, the pub is located at the junction of Chilwell Road and Forester Avenue.



Post office in 1986.

The main part of the building was converted to a Wetherspoon pub in 2000 but a small section of the block is still home to a post office.



LLOYDS NUMBER No1

opened 27th August 2000



LLOYDS No.1 BAR



Lloyds No.1 Bar



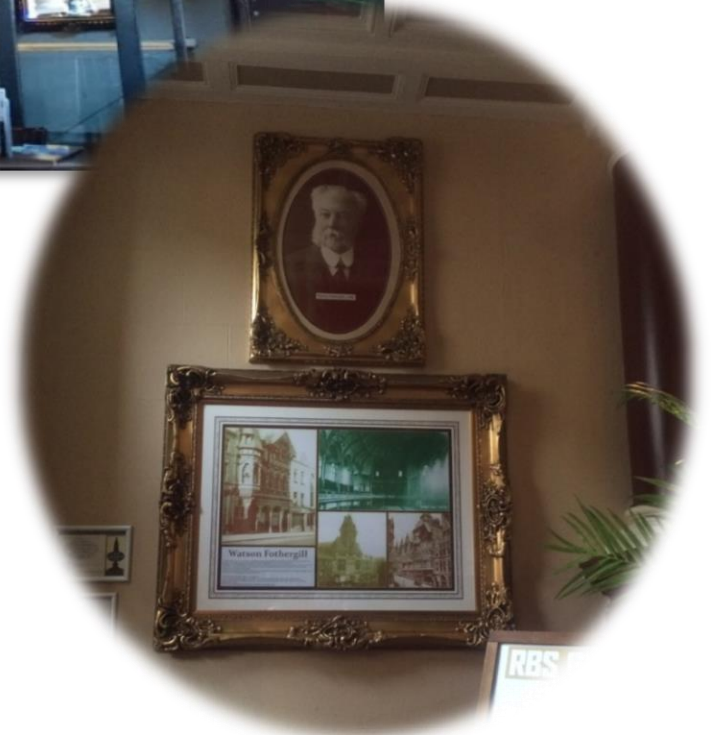
Our Lloyds No.1 Bars offer the same great customer service, product range and value for money as our Wetherspoon pubs, with one slight difference: music.

We have Lloyds No.1 bars all over the UK; these bars serve our fantastic breakfasts and menu, offer your favourite weekly club meals and, as they're often in city centres, are a great place to break from shopping or meet with friends.

What makes these bars unique from our Wetherspoon pubs apart from music? Many of our Lloyds bars have student nights and are open late on weekends, with DJ's and lighting turning the pubs into a club. This lively atmosphere, paired with our fantastic value drinks range, can make for a great night out. Our Lloyds bars have a whole host of special evenings and offers – so check with your local what's going on!

So whether you fancy a quick bite before hitting the shops in the afternoon, or you want to dance into the early hours, our Lloyds No.1 bars are the perfect destination.







The Wright's Bank was built in a L plan in 1858 by CH Edwards of London. Later additions and alterations were added by Evans & Jolley in the late 1880's. The corner building was built in the late 18th century but they are two separate buildings.

A drawing in The Builder magazine of 1860, suggests that the entrance was larger but this cannot be proven. The whole site however was dominated by an earlier building known as 'Gregory Mansion'. This house built in 1674 and surrounding land was owned by the Gregory family and leased to the Wright's in 1794. They purchased the freehold in 1807 but still occupied the old house until the new 1858.





The banking business was established in 1761 by Ichabod Wright. Ichabod died in 1790 and his son, Ichabod Wright Jr along with his cousin John Wright, became the principals. For a while (1795-98) the youngest son of Ichabod, John Smith Wright, was taken into the partnership. From 1830 after John Wright's retirement the bank remained in Ichabod's line of the family until 1898 when it became The Capital & Counties Bank. It was absorbed into the Lloyds Bank in 1918 and remained a bank until 1995.

The Wright family.

Ichabod Wright- founder of the Wright's Bank.

Ichabod Wright Jr- raised the first troop of the South Notts Yeomanry Cavalry, freeman of the Borough, owned and lived at Mapperley Hall.

John Smith Wright- one of the founders of the Mechanics Institute and Ragged School.

Ichabod Charles Wright- wrote pamphlets on banking, a director of Midlands Railway, 1833 published a metrical translation of Dante's Divine Comedy.

Francis Wright- built Lenton Hall, High Sheriff of Nottingham 1842, the principal proprietor of Butterley Ironworks.

Henry Smith Wright- MP for Nottingham South, translated Virgil.

Did You Know.....we are a top UK employer?

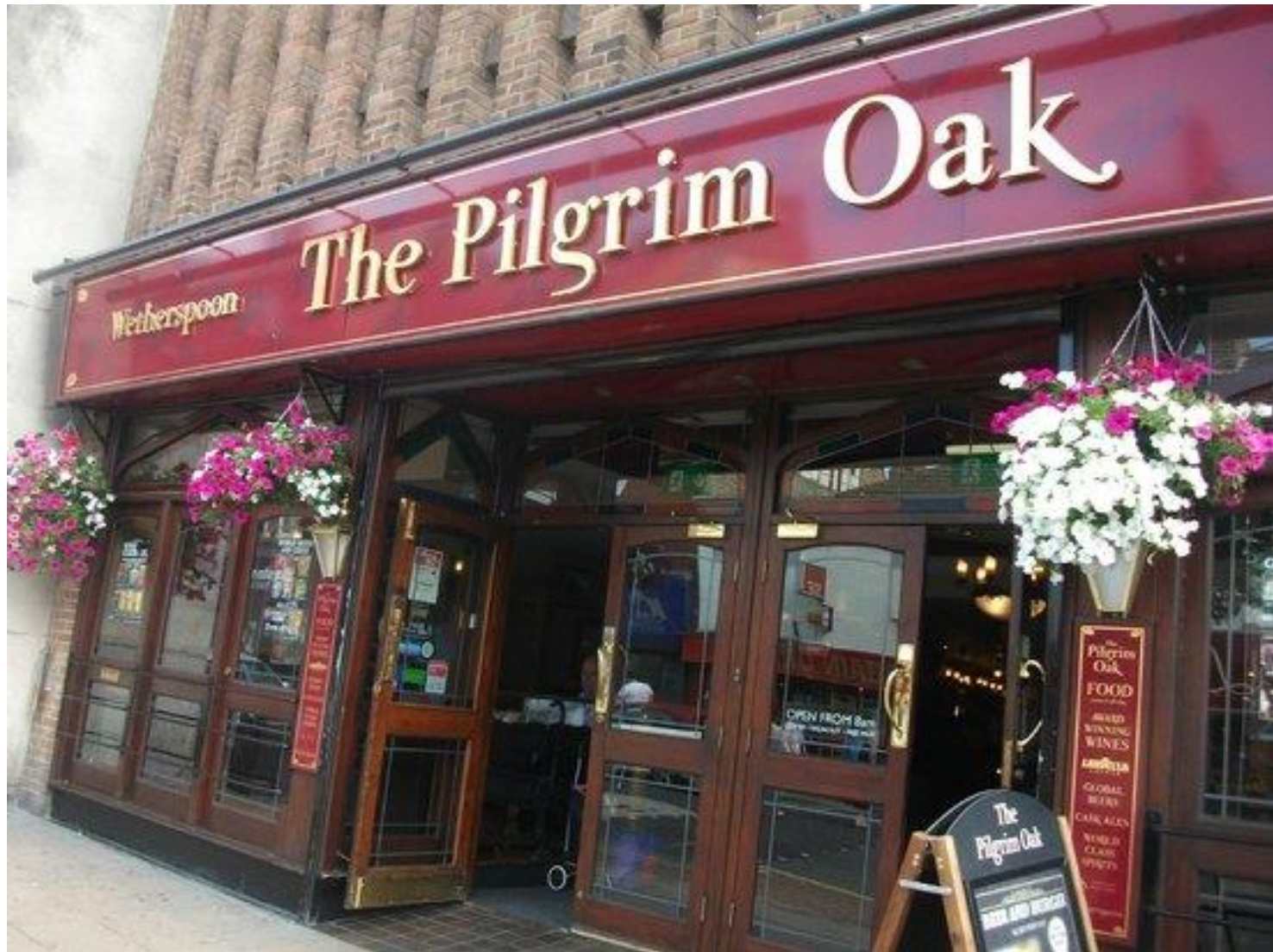


For the 13th consecutive year we have been certified by the Top Employer Institute an independent organisation behind the awards.

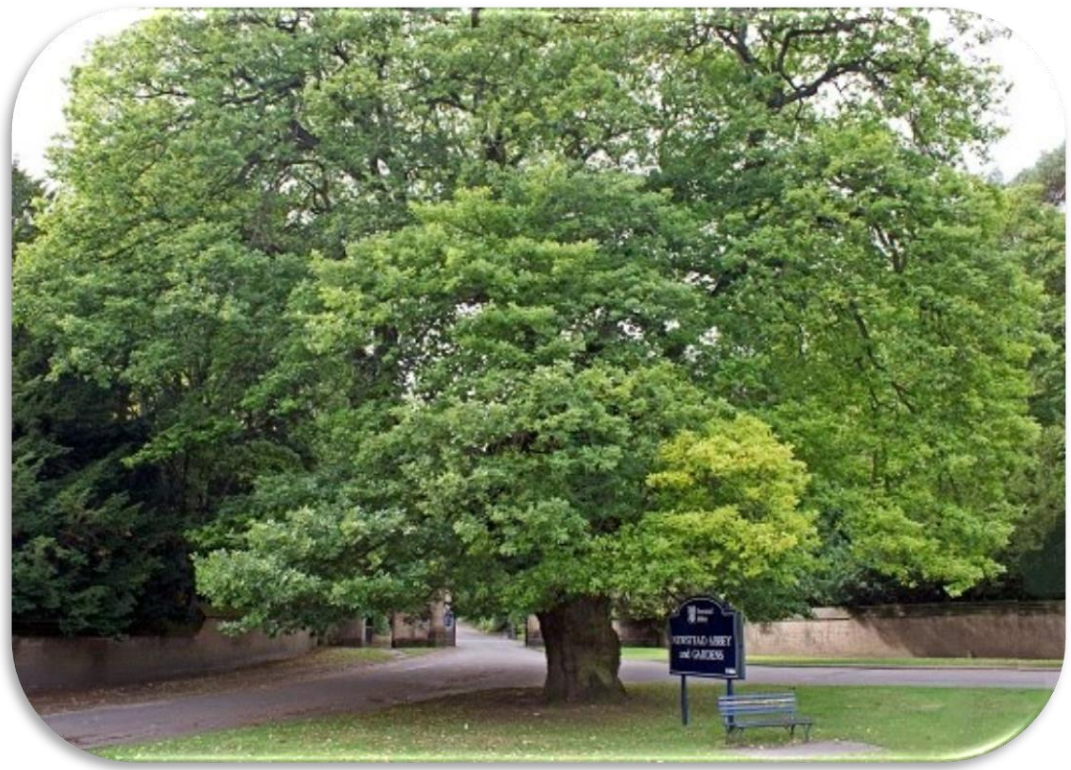
Wetherspoon was assessed on primary benefits, secondary benefits and working conditions, training and development, career development and company culture.

PILGRIM OAK

opened 14th July 1998



The Pilgrim Oak from where the pub takes its name stands in front of the gates to Newstead Abbey. This is the spot where pilgrims would stop and gather together to read from the bible before moving on to the Priory itself. For obvious reasons Pilgrim Oak is also sometimes referred to as the Gospel Oak, and it is thought that the site was also the place where people would gather to celebrate various religious festivals during the year. Happily, it remains in a superb, healthy condition to this day.



‘Men may come and men may go but the old tree survives unchanged through the centuries of drastic change in the world round about it’.

Lord Byron, one of England’s best-known poets, was buried in St Mary’s, Hucknall, in 1824. Newstead Abbey, Byron’s ancestral home is near Hucknall and Lord Byron is remembered in several places in the town – a small statue stands in a niche on the old Co-op, in Market Place, and the Byron cinema is named after the poet.



ROEBUCK INN

opened 11th October 2000





Just borrowed your name!

The Roebuck Inn is named after the pub opposite, the Malt Cross, which was built in 1877. The former pub to stand on that site was called The Roebuck and dates to 1760.

The building that this pub occupies, 9-11 St James Street is actually a pair of 1780's houses.

Many original features like the oval entrance hall, spiral staircase and fan ceilings are remarkably well preserved.

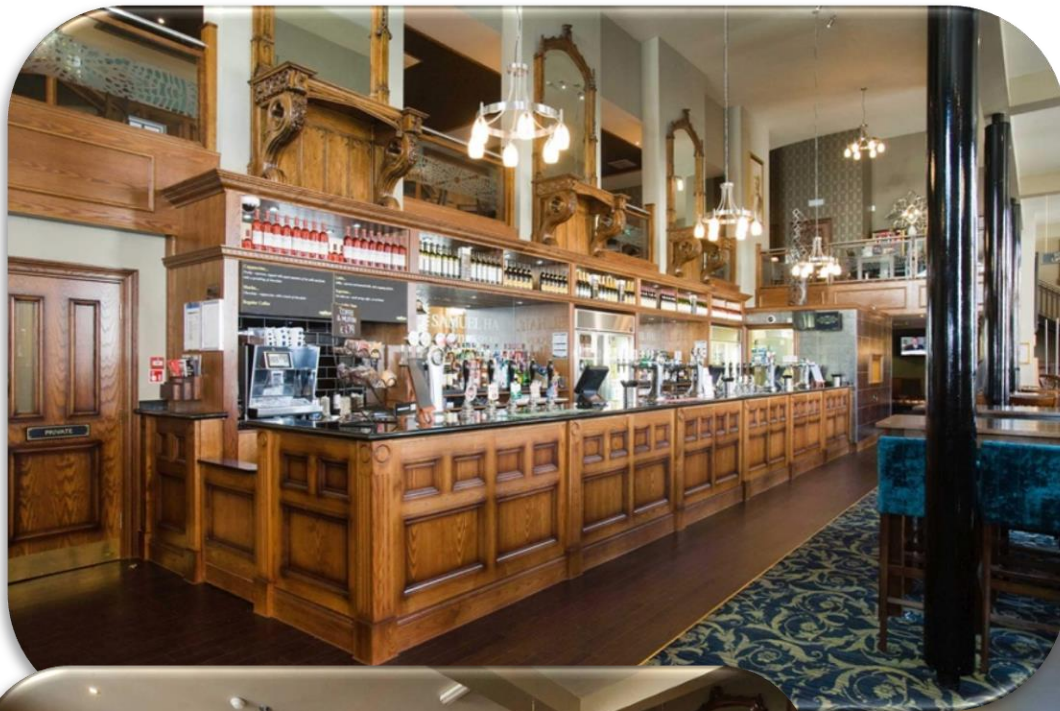
The rear garden is a reminder of a former domestic use and a rare sight in the city centre.



SAMUEL HALL

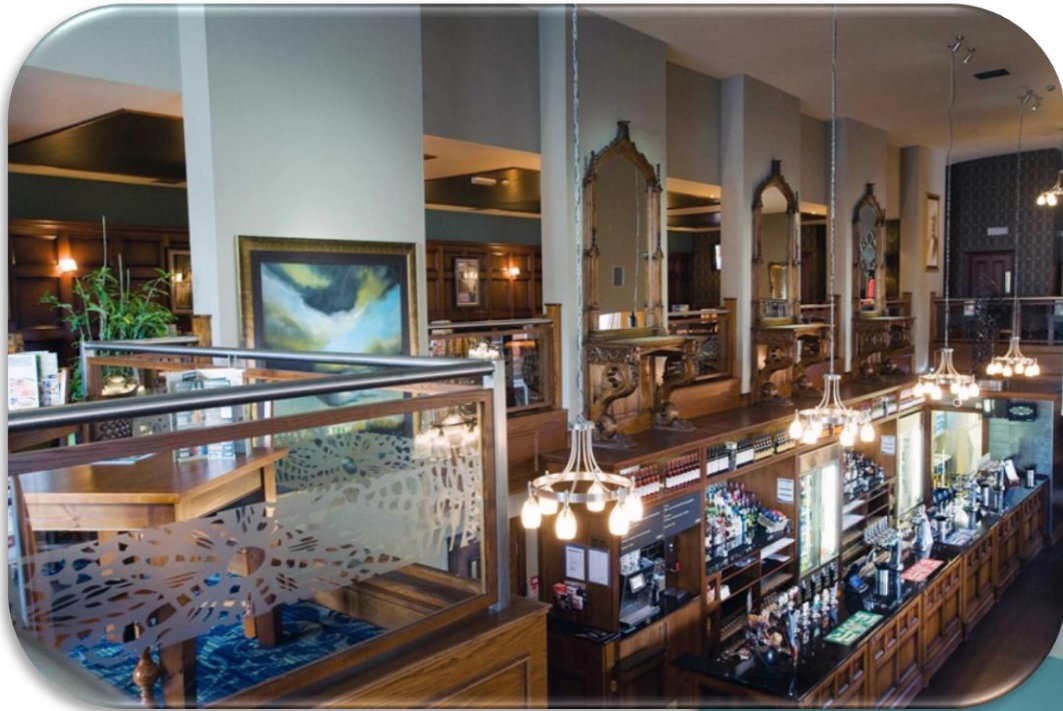
opened 23rd August 2010





The pub occupies part of the Sherwood Bus Depot built in 1900 by the Nottingham Corporation Tramways. Trams ran on this route until September 1936.





The pub features a mezzanine floor with a large window looking out onto Mansfield Road.



Samuel Hall 1781-1863.

'father of the surface condenser'.



The son of a cotton manufacturer, in 1817 Hall devised a method for removing loose fibres from lace by passing the fabric swiftly through a row of gas flames. His process was widely adopted and earned him a fortune, much of which he lost on other inventions.

In subsequent years Hall attempted to find a means by which steamships could charge their boilers with fresh water at the beginning of their voyage and use it over and over again, so as to avoid the use of corrosive salt water. In 1838 he patented a surface condenser in which the steam passed through a number of small condensing tubes cooled on the outside. Although his invention received extensive trials in 1839–41, it proved unsuccessful. The principle of the tubular condenser survived, however, and is now used mostly in cooling devices. Hall held more than 20 patents, mostly for devices relating to steam engines and boilers.

Samuel Hall and Sherwood



Some of the earliest houses built in Sherwood were the result of two perspective land owners, James Hooley and Samuel Hall.

Hooley purchased land in 1814 and Hall in 1825. They both give their names to streets in the area.

White's Directory of 1832 describes Sherwood as, *'another populous district of newly built houses'*. Some of the earliest houses in Hooley Place survived until the 1950's but the area still retains parts of the 1820's development by Samuel Hall.

Did You Know.....we have raised over £12m for CLIC?



The partnership with Clic Sargent began in 2002.

Funds are raised with individual pubs holding events and through several nationally organised events each year in which all the pubs take part like Kick for Clic, Darts for Clic and Wig Wednesday.

In April 2016 we reached the milestone of £12m and we will continue to support this great charity.



‘The World Renowned’ Trent Bridge Inn offers several bars and function rooms with sporting memorabilia and many original features.

It is the largest Wetherspoon pub in Nottingham and is one of our flagship bars.



Trent Bridge Inn, 1876.

A pub can be seen on a map of this area in 1838 and is called The Three Horseshoes and Crown. Later it was renamed the Trent Bridge Inn and was 'a country inn' providing overnight accommodation for travellers. This inn was demolished and rebuilt in 1888-90.



Side by side in 1890.

The new Trent Bridge Inn was built in 1888–90 by William Bright with extensions added in 1919 to Radcliffe Road by Thomas Jenkins which saw the corner tower constructed.

WOODTHORPE TOP

opened 14th November 2008



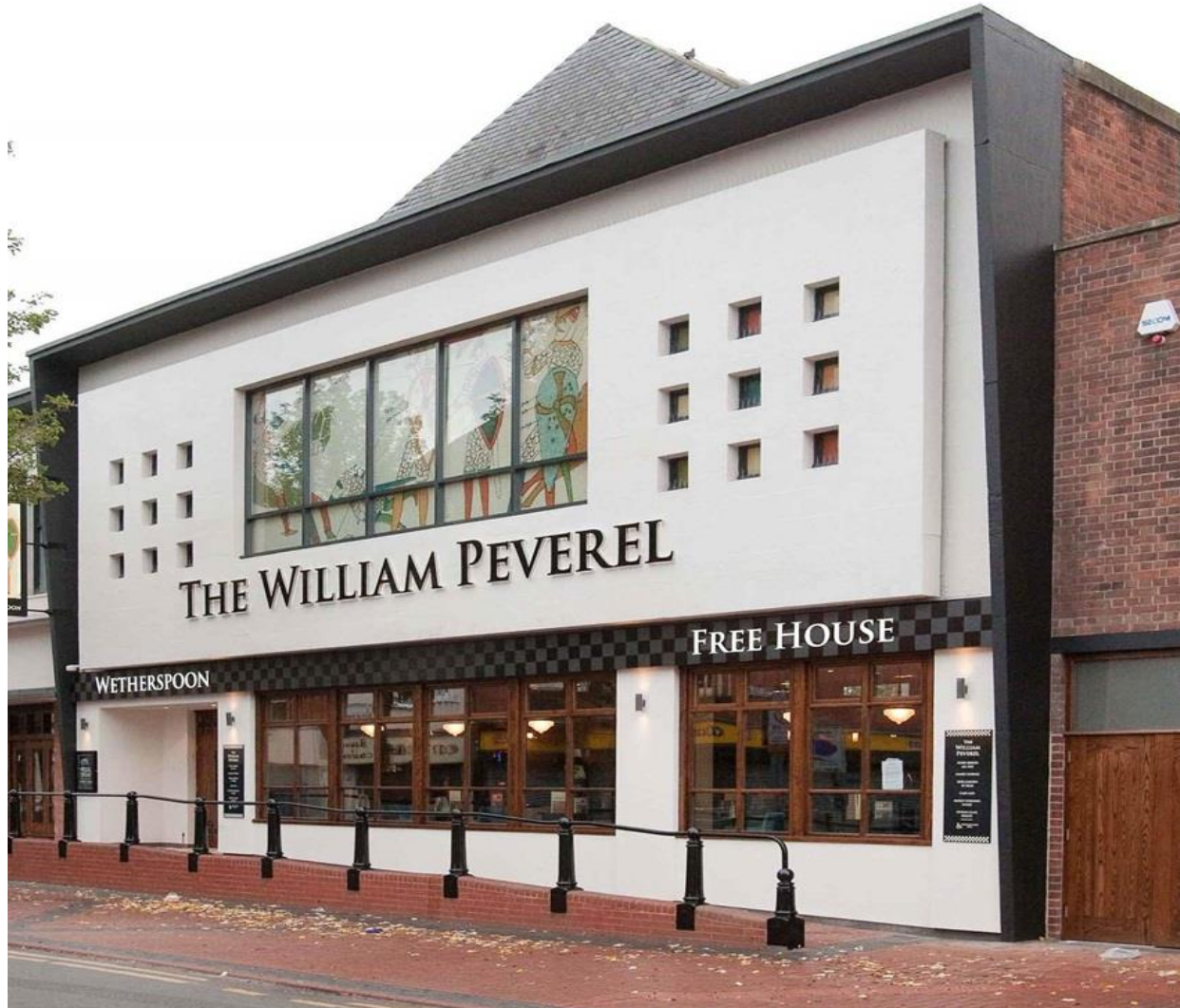
Simply taking its name from its location, The Woodthorpe Top occupies a former 24/7 mini supermarket built in the 1990's.

Much of its internal decoration is focused on trees owing to the fact that this ancient track out of Nottingham was a densely wooded area.



WILLIAM PEVEREL

opened 20th September 2011

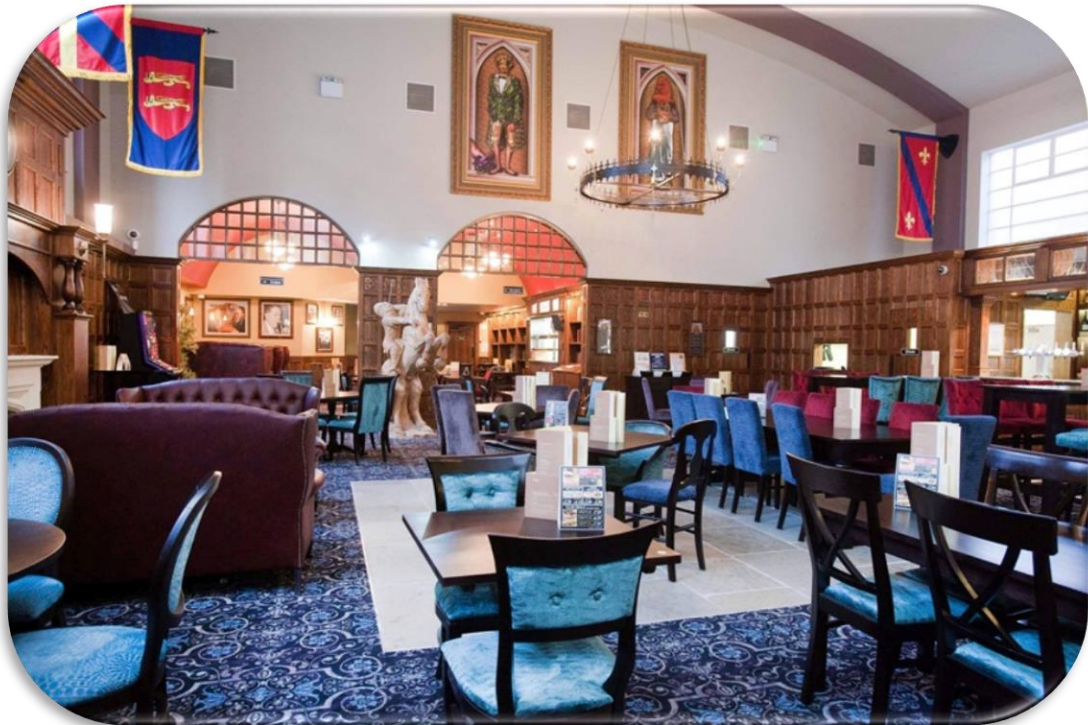




The pub is named after William Peverel, a son of William the Conqueror.

Much of the pub's interior decor is natural oak and the main feature is the large vaulted roof over the main area.

Originally built as a cinema in 1911 it then became a Co-Op store in 1955. Later it transformed into a Wilkinson's store before being converted into a Wetherspoon pub in 2011.





Why does Bulwell have Peverel?

The Domesday Book of 1086 records William as the holder of 162 manors, forming collectively the Honour of Peverel, in Nottinghamshire and Derbyshire, including Nottingham Castle. He also built Peveril Castle, at Castleton,

William Peverel is thought to have been the illegitimate son of William the Conqueror although this claim remains unsubstantiated, tradition states that Peverel was the son of the Conqueror by a Saxon princess Maud Ingelrica and was born prior to the king's marriage to Matilda of Flanders.

William Peverel certainly was a favourite of William I. He was generously rewarded after the Norman Conquest of England, being granted over a hundred manors in central England from the king.

William Peverel was granted extensive lands in Derbyshire and Nottinghamshire by King William the Conqueror in reward for supporting him during the Norman Conquest of England. His name is listed in the Roll of Battle Abbey.



Originally built as the Palace Cinema in 1911. It closed in 1955 and was re-fronted and converted into a Co-Op store.

It became a Wilkinsons store and has now had a new lease of life as a Wetherspoon pub, The William Peverel.

Did You Know.....Every pubs carpet is different?



Its true and there's a book to prove it!

Every Wetherspoon pub has a unique carpet that will not be found anywhere else and in 2016, Kit Caless published the book, Spoon's Carpets An Appreciation.



Some Of The Rest



Velvet Coaster, Blackpool

opened 12th May 2015





On three floors, the Velvet Coaster dominates the sea front in Blackpool. A large roof terrace takes advantage of the views and sometimes the sun.

A glass lift allows you to travel between the levels



Watch Maker, Prescott

opened 15th December 2011





The Eccleston Street building known as 'Flat Iron House' (owing to its unusual shape) is the former Lancashire Watch Company Warehouse. Prescot was once famous for watch-making. In 1795, it was said that 'the town produces the best in the world'. At one time, there was a workshop at the back of every house in Eccleston Street and nearby Atherton Street, where parts were made or watches assembled. The watch trade eventually died out in Prescot in the 1920s.

Windmill, Stansted

opened 2015





The original Windmill pub opened at Stansted Airport in 2003.

This new pub by the same name relocated in 2015.

Its name recalls the windmills that once stood in the area.



The Great Western

opened 2016





This grade II listed building was originally the North Western Hotel, 1871. The 330-room hotel was built by the London and North Western Railway to serve Liverpool Lime Street Station. It was designed by the renowned Liverpool-born architect Alfred Waterhouse.

Standing opposite Lime Street Station in the heart of Liverpool.

Set out on three floors it offers an open spacious feeling surrounded with railway memorabilia.



Briar Rose, Birmingham

opened 2012





The art-deco building of the 1920's was home to the Commercial Union Assurance.

Converted to the pub and hotel in 2012, the rooms are boutique in style whilst the bar area retains its 1920's art-deco style.

The name of this pub and hotel recalls a series of paintings by Edward Burne-Jones, illustrating the theme of Sleeping Beauty. The well-known artist was born in Bennetts Hill, in 1833.



Red Lion, Ripley

opened 21st December 1999





Trams operated from Ripley to Nottingham from 1913 to 1933. The switchback route through the hill towns of Eastwood, Heanor, Codnor and Ripley, together with the fact that the route was single track with no fewer than 316 passing loops made the journey long and bumpy, and gained the trams the reputation of being “the most dangerous tram route in Britain”.





Ripley Rattler 4.5%

A refreshing light beer that offers delicate floral notes and a balanced hop taste that is great on a summers evening.

Brewed by Nottingham Brewery for the Red Lion, Ripley.

Still leading the way!

Please come and visit us



wetherspoon hotels 



NEW

